

ELECTRICAL DRAFT BARRIER HEATERS

MODEL SBT/SBF AND SBT/SBF-PD

Submittal

| | | |
|---------|----------|----------|
| Project | Engineer | Customer |
|---------|----------|----------|

| Item | Quantity | Catalog No. | Length | Volts | Watts | Amps | Built-In Controls | Color |
|------|----------|-------------|--------|-------|-------|------|-------------------|-------|
| | | | | | | | | |

SB FEATURES

SBT – Bottom intake, top discharge
SBF – Front intake, top discharge
Two piece all aluminum, 14 gauge front and back.

- Extended backs and fronts available.
- 4" junction boxes at each end.
- 3/4" EMT raceway standard.
- 1/2" and 3/4" knockouts.
- Control packages available.
- In house engineering and design assistance.
- Custom selection of convector lengths from 2' to 12' length in 1/16" increments.
- Multiple heater sections on one common back.
- UL and CUL listed.
- Full length thermal limit switch.
- Clear anodized available decorator painted finishes.
- Custom finishes specified by the architect are available.
- Available with optional 2" pedestals and finished back.
- 1/4" pencil proof discharge grill.
- Accessories include: end caps, wall trims, splice plates, corners and blank sections.
- Cabinet size is 3"W x 5"H.
- Available with built in thermostat or disconnect.
- Wattages from 100 to 250 watts per foot.

Suggested Engineering Specifications

Model SB Architectural Draft Barriers shall be 5" high and 3" wide. The front cover shall be 14 gauge extruded aluminum construction suitable for Architectural, Commercial and Industrial use with 1/4" pencil proof intake and discharge grills. The one piece cover shall be extruded for maximum strength and shall be available in lengths up to 12'.

The cover shall be linear mount to the 14 gauge heater back with no visible fasteners. The 14 gauge heater back shall be suitable for mullion to mullion mounting.

SB-PD series shall have 2" adjustable pedestals and the heater back will be painted to match the front cover.

Standard painted finishes or optional anodizing (see color chart) shall be provided as specified by the architect. Color matching to architects specifications are available as optional finishes.

Heat sections from 2' to 10' are available. All heaters shall contain 3/4" EMT built in raceway with factory wiring to provide field wiring from either end when optional controls are not included.



1/2" and 3/4" knockouts shall be provided in the side and rear of the heater junction box to permit end to end wiring. All blank sections shall be fully enclosed to allow branch circuit wiring. All heaters shall contain a full length thermal overhear protector with automatic reset. Wattages shall be available from 100 to 250 watts per foot. Heating elements shall be tubular stainless steel or aluminum tubing with aluminum fins mechanically bonded to ensure efficient heat transfer.

Element fin temperature shall not exceed 350 degrees Fahrenheit to ensure long element life. Elements shall be center anchored and free floating in nylon bushings at each end.

Control sections include 6" or 12" with: disconnect, thermostat, pneumatic relay, transformer relay, relay, fused disconnect or duplex receptacle. Standard built-in controls shall include thermostats (single and double pole) and disconnect switches.

Built-in controls shall be tamper proof and shall be adjustable with a blade screwdriver through the discharge louver.

All heaters are Underwriters Laboratories listed.

Standard Painted Finishes

Black, Bronze, Gray, Tan, White, Standard Gray, Beige, Silver

Furniture, Drapes & Carpeting

Proper operation of heater requires free circulation of room air through the heating element. Keep electrical cords, drapes, rugs and other furnishings away from the heater.

Furniture should be placed no closer than 4" from the heater. Drapes should clear the top of the heater by at least 12". Or, if you prefer floor length drapes, they should clear the floor by 3", and the minimum clearance from the back fold to the front cover should be at least 4".

For best results when carpeting is involved in the installation, allow clearance for carpet to be installed under the heaters and corners. Rugs can be placed up to the heater provided that they are not of a thickness that would block the air-intake at the bottom of the heater.

CONTROLS BUILT-IN

SB-ITS (thermostat)

Single pole rated 25 amps, 120 – 227 volt. Adjustable through discharge grill, mounted in right hand junction box.

SB-ITD

Same as Above (double pole.)

SB-IDS (disconnect)

Double pole, rated 20 amps, 120 – 277 volt. Adjustable through discharge grill, mounted in left junction box.

CONTROL SECTIONS SB-CS

6" Control Section

6" long and can be added to total enclosure length. Contains 1 or 2 controls. Right or left hand mounting (right hand is standard).

12" Control Section

12" long and can be added to total enclosure length. Contains 1, 2 or 3 controls. Right or left hand mounting (right hand is standard).

PR (power relay), PE (Pneumatic relay), MDR (mercury relay)

Single or double pole (specify). Rated 25 amps, Low or line volt coils (specify).

TR (transformer relay)

Single pole, rated 25 amps, 120 – 277 volt. Contacts rated up to 277 volt (specify). Coils are 24 volt.

DR (duplex receptacle)

Mounted on front cover. Rated 15 amps, 120 volt. Snap in type control section mounting.

FDS (fused disconnect)

Fuse block with fuse and 20 amp disconnect switch. Control section mounting.

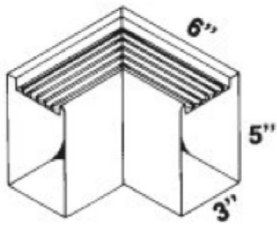
ACCESSORIES

| Cat. No. | Description |
|----------|---------------------------------------|
| SB-WT | Wall Trim (specify 4" or 6") |
| SB-SP | Splice Plate 2" |
| SB-EC | End Cap (specify right or left) |
| SB-IC | Inside Corner (specify miter degree) |
| SB-OC | Outside Corner (specify miter degree) |
| SB-BS | Blank Section |
| SBT | Bottom Intake, Top Discharge |
| SBF | Front Intake, Top Discharge |

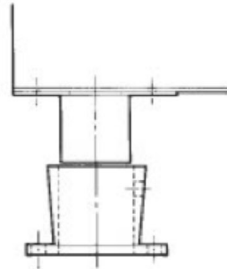
| Catalog Number | Wattage | | BTU/Hr | Length |
|----------------|---------|-------|--------|--------|
| | Nominal | Total | | |
| SB-2150 | 150 | 300 | 1023 | 2' |
| SB-2200 | 200 | 400 | 1364 | |
| SB-2250 | 250 | 500 | 1706 | |
| SB-3100 | 100 | 300 | 1032 | 3' |
| SB-3125 | 125 | 375 | 1280 | |
| SB-3150 | 150 | 450 | 1535 | |
| SB-3200 | 200 | 600 | 2406 | |
| SB-3250 | 250 | 750 | 2560 | |
| SB-4100 | 100 | 400 | 1364 | 4' |
| SB-4125 | 125 | 500 | 1706 | |
| SB-4150 | 150 | 600 | 2046 | |
| SB-4200 | 200 | 800 | 2728 | |
| SB-4250 | 250 | 1000 | 3414 | |
| SB-5100 | 100 | 500 | 1706 | 5' |
| SB-5125 | 125 | 625 | 2130 | |
| SB-5150 | 150 | 750 | 2560 | |
| SB-5200 | 200 | 1000 | 3414 | |
| SB-5250 | 250 | 1250 | 4266 | |
| SB-6100 | 100 | 600 | 2046 | 6' |
| SB-6125 | 125 | 750 | 2560 | |
| SB-6150 | 150 | 900 | 3069 | |
| SB-6200 | 200 | 1200 | 4092 | |
| SB-6250 | 250 | 1500 | 5120 | |
| SB-7100 | 100 | 700 | 2387 | 7' |
| SB-7125 | 125 | 875 | 2986 | |
| SB-7150 | 150 | 1050 | 3581 | |
| SB-7200 | 200 | 1400 | 4774 | |
| SB-7250 | 250 | 1750 | 5973 | |
| SB-8100 | 100 | 800 | 2728 | 8' |
| SB-8125 | 125 | 1000 | 3413 | |
| SB-8150 | 150 | 1200 | 4092 | |
| SB-8200 | 200 | 1600 | 5456 | |
| SB-8250 | 250 | 2000 | 6826 | |
| SB-9100 | 100 | 900 | 3071 | 9' |
| SB-9125 | 125 | 1125 | 3840 | |
| SB-9150 | 150 | 1350 | 4606 | |
| SB-9200 | 200 | 1800 | 6141 | |
| SB-9250 | 250 | 2250 | 7678 | |
| SB-10100 | 100 | 1000 | 3413 | 10' |
| SB-10125 | 125 | 1250 | 4266 | |
| SB-10150 | 150 | 1500 | 5120 | |
| SB-10200 | 200 | 2000 | 6826 | |
| SB-10250 | 250 | 2500 | 8532 | |

NOTE: Consult factory for 120 volt applications.

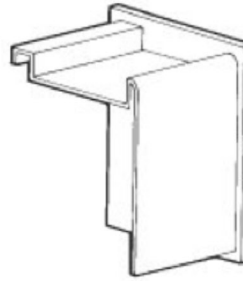
CORNERS, FILLERS, BLANK SECTIONS & END CAPS



INSIDE CORNER



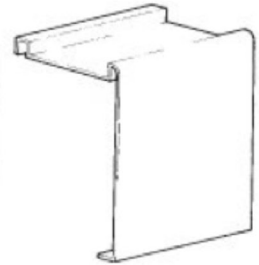
CAST PEDESTAL



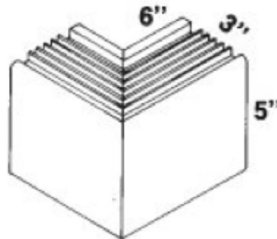
END CAP



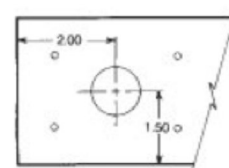
SPLICE PLATE



WALL TRIM



OUTSIDE CORNER



BOTTOM VIEW
Pedestal Unit Only